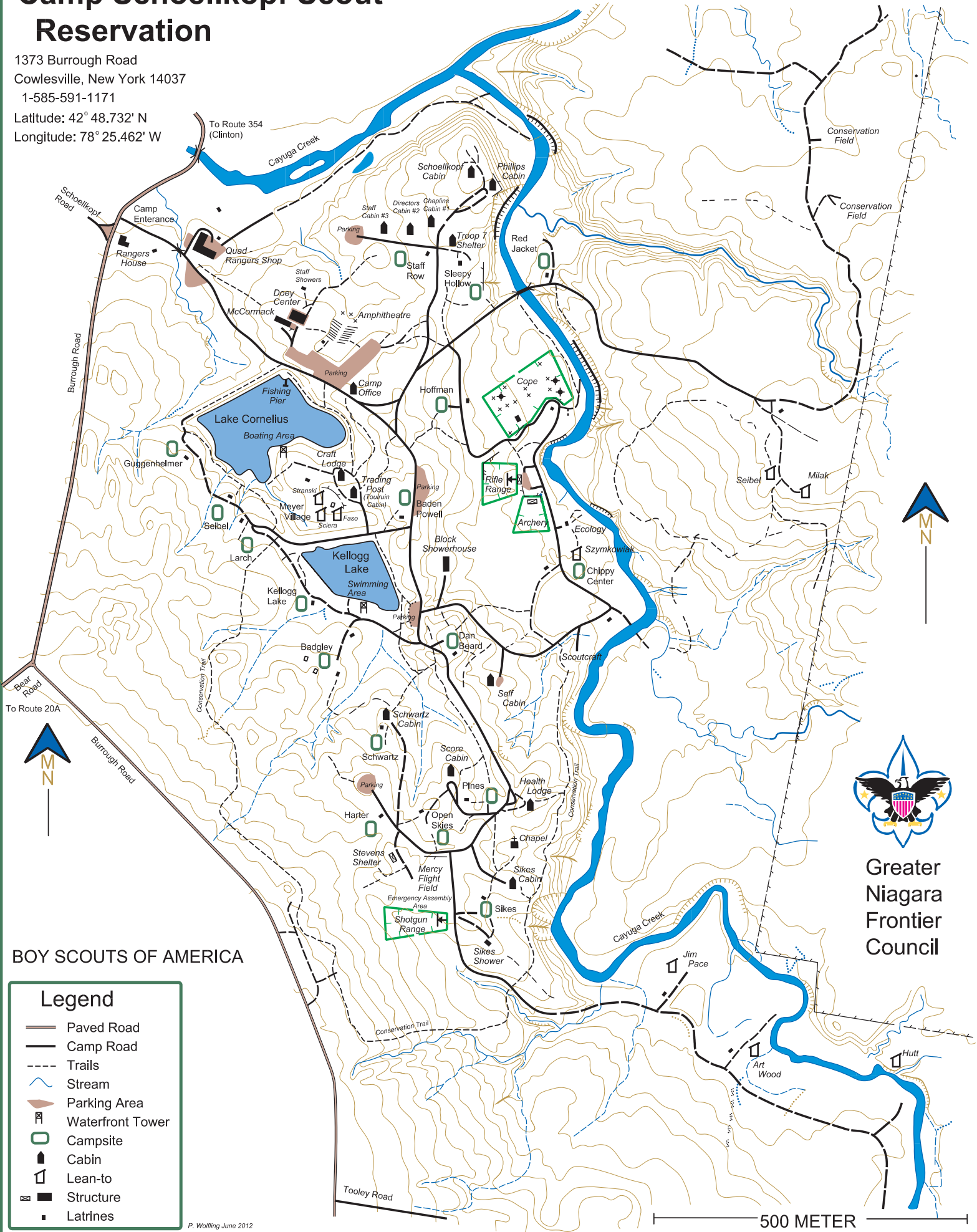


Camp Schoellkopf Scout Reservation

1373 Burrough Road
 Cowlesville, New York 14037
 1-585-591-1171
 Latitude: 42° 48.732' N
 Longitude: 78° 25.462' W



Greater
 Niagara
 Frontier
 Council

BOY SCOUTS OF AMERICA

Legend

- Paved Road
- Camp Road
- Trails
- Stream
- Parking Area
- Waterfront Tower
- Campsite
- Cabin
- Lean-to
- Structure
- Latrines

500 METER

P. Wolfing, June 2012